

HPfC Deep Hole

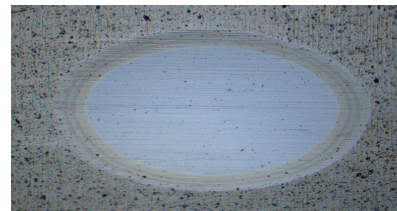
High Performance Coating for Deep Hole Drilling

HPfC Deep Hole

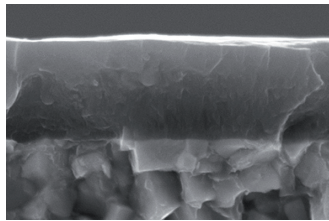
A stable cutting edge and very good chip flow are very important for successful deep hole drilling.

With the HPfC Deep Hole treatment we enable both. The AlTiSiN based coating is applied on the tip for perfect heat and wear resistance and the Ti(X)2 type coating on the flutes provides for good chip flow.

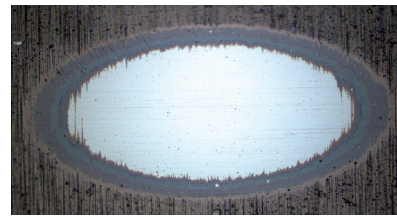
After regrinding only the tip needs to be recoated.



flute coating structure



cutting edge coating structure



cutting edge coating structure

Increase the Performance of Your deep hole drills



*Increase your
Competitiveness!*

Properties

- very high heat and wear resistance on the cutting edge
- low friction in the flutes
- easy chips removal

more holes in less time